



Olaines 1.vidusskola
Zeiferta 4
LV-2114 Olaine
Latvija
www.o1vsk.lv



IT'S TIME TO CARE!

PROJECT DURATION: 1 SEPTEMBER 2018 - 31 AUGUST 2020



Erasmus + Meeting in Prerov, the Czech Republic

Olaine Secondary School No1
November 2018



Olaines 1.vidusskola
Zeiferta 4
LV-2114 Olaine
Latvija
www.o1vsk.lv



IT'S TIME TO CARE!

PROJECT DURATION: 1 SEPTEMBER 2018 - 31 AUGUST 2020





Olaines 1.vidusskola
Zeiferta 4
LV-2114 Olaine
Latvija
www.o1vsk.lv



IT'S TIME TO CARE!

PROJECT DURATION: 1 SEPTEMBER 2018 - 31 AUGUST 2020



How do we use the land?

The total area of Latvia is 64 589 km².

- **Forest – 53%**
- **Agriculture – 36%**
- **Industry – 7%**
- **Building – 4%**

There are 5 types of soil in Latvia:

- Clay
- Sand
- Peat
- Topsoil
- Gravel



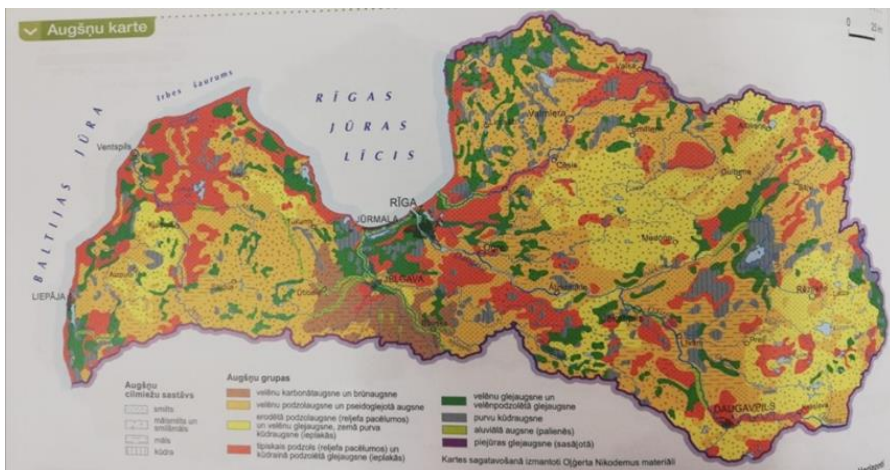
Does our country use land in the right way?

The crops are cultivated on the topsoil.

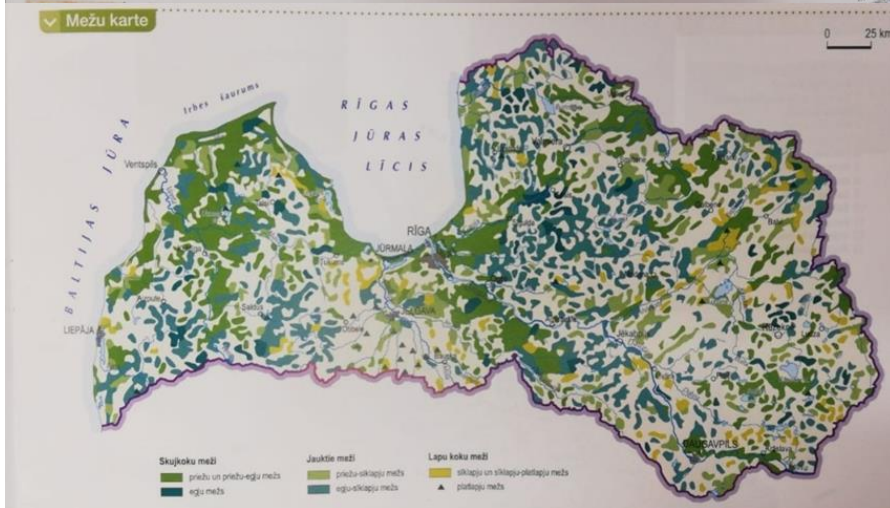
On podzolated soil there are forest territories.



There are about 302 000 ha of usable agriculture land that we don't use. Forests take over these territories.



The map of **soils** in Latvia.



The map of **forests** in Latvia.



Olaines 1.vidusskola
Zeiferta 4
LV-2114 Olaine
Latvija
www.o1vsk.lv



IT'S TIME TO CARE!

PROJECT DURATION: 1 SEPTEMBER 2018 - 31 AUGUST 2020



The prevailing tree species in Latvia are the coniferous trees – a pine and a spruce.

Conifers occupy 71% of the forest area;

birch trees – 24%;

other trees like, linden trees, oak trees, maple trees, aspen, common alder – 5%





Olaines 1.vidusskola
Zeiferta 4
LV-2114 Olaine
Latvija
www.o1vsk.lv



IT'S TIME TO CARE!

PROJECT DURATION: 1 SEPTEMBER 2018 - 31 AUGUST 2020



“Latvia’s State Forests” – a Joint Stock Company.

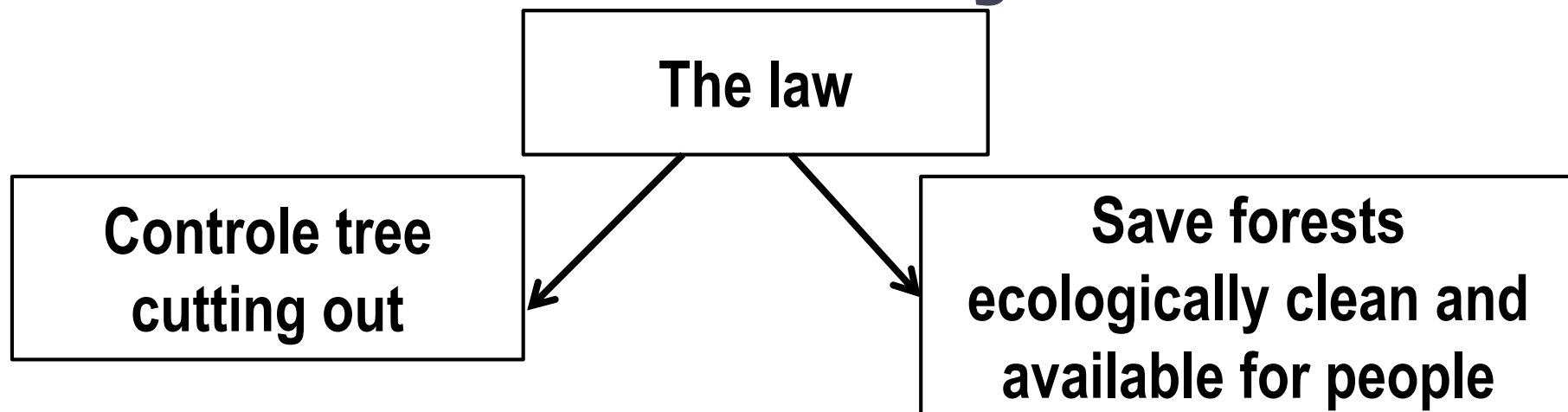
The purpose of Latvia’s State Forests:

- ✓ administration of state-owned forest property,
- ✓ management of public forest,
- ✓ preservation and increase of the forest value,
- ✓ generation of revenue for its owner – the State.



LATVIJAS VALSTS MEŽI

Does your country keep the forest sustainability?



Last years significantly has increased that part of state forest area, which main purpose is saving **Environmental Values** and ensuring of recreational facilities to every citizen.



Olaines 1.vidusskola
Zeiferta 4
LV-2114 Olaine
Latvija
www.o1vsk.lv



IT'S TIME TO CARE!

PROJECT DURATION: 1 SEPTEMBER 2018 - 31 AUGUST 2020



Sustainability

- More than 360 Latvia's State Forests recreation sites are available for citizens of Latvia.
- Forestry is the one of the most economically important sectors in Latvia that makes a significant contribution on overall economical development of Latvia.





Olaines 1.vidusskola
Zeiferta 4
LV-2114 Olaine
Latvija
www.o1vsk.lv



IT'S TIME TO CARE!

PROJECT DURATION: 1 SEPTEMBER 2018 - 31 AUGUST 2020



In November pupils of Eco-Schools Committee had a meeting with Jānis Rozītis, Forest programme Manager, WWF in Latvia. There was information about soils in forests, growth characteristics, as well as sustainable management of forests in Latvia. At the end some discussion took a place.





Olaines 1.vidusskola
Zeiferta 4
LV-2114 Olaine
Latvija
www.o1vsk.lv



IT'S TIME TO CARE!

PROJECT DURATION: 1 SEPTEMBER 2018 - 31 AUGUST 2020



Thank you for attention!

